

FIGURE 3.3i Map showing Mangrove cover in West Bengal

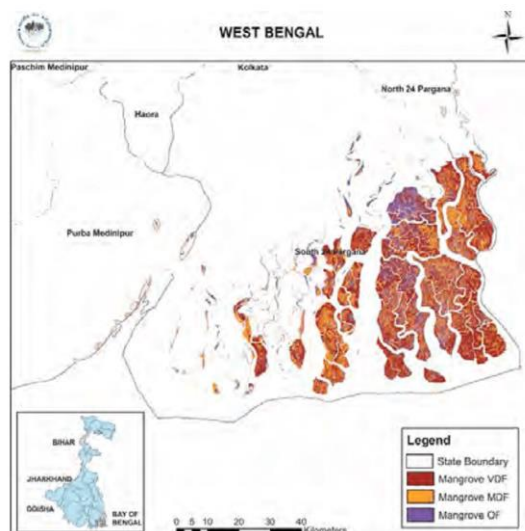
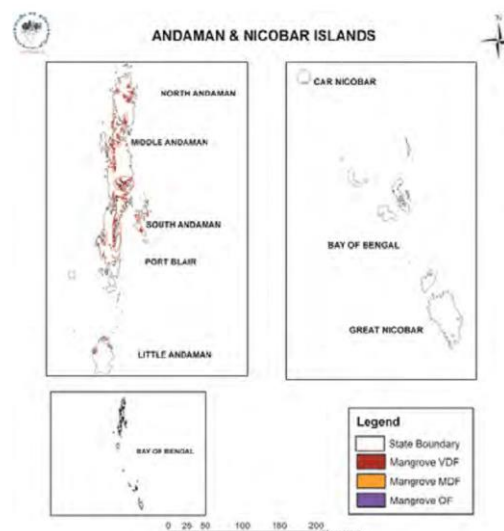


FIGURE 3.3j Map showing Mangrove cover in A & N Islands



- **West Bengal** has 42.45% of India's mangrove cover, followed by **Gujarat** 23.66% and **A&N Islands** 12.39%.
- **Gujarat** shows maximum increase of 37 sq km in mangrove cover.

- Subsequently, their system became the standard in forest type classification in the country.
- Their classification of forest types is based on the premise that a forest type could be treated as a distinct ecosystem; many preceding forest classification systems are based on climate, soil or vegetation alone.
- It is a three-tier system of classification: six climate based major groups were sub-divided into 16 precipitation and temperature range based type groups.

Forest Types and Biodiversity

- H.G. Champion first enunciated a classification system for forests of undivided India in 1935.
- S.K. Seth subsequently joined Champion in refining the earlier work in 1968.

Area under different Forest Type Groups of India

S.No.	Type Group	Area in sq km	% of Grand Total
1.	Group1: Tropical Wet Evergreen Forests	20,054	2.61
2.	Group2: Tropical Semi Evergreen Forests	71,171	9.27
3.	Group3: Tropical Moist Deciduous Forests	1,35,492	17.65
4.	Group4: Littoral & Swamp Forests	5,596	0.73
5.	Group5: Tropical Dry Deciduous Forests	3,13,617	40.86
6.	Group6: Tropical Thorn Forests	20,877	2.72
7.	Group7: Tropical Dry Evergreen Forests	937	0.12
8.	Group8: Subtropical Broadleaved Hill Forests	32,706	4.26
9.	Group9: Subtropical Pine Forests	18,102	2.36
10.	Group10: Subtropical Dry evergreen Forests	180	0.02
11.	Group11: Montane Wet Temperate Forests	20,435	2.66
12.	Group12: Himalayan Moist Temperate Forests	25,743	3.35
13.	Group13: Himalayan Dry Temperate Forests	5,627	0.73
14.	Group14: Sub Alpine Forests	14,995	1.96
15.	Group15: Moist Alpine Scrub	959	0.13