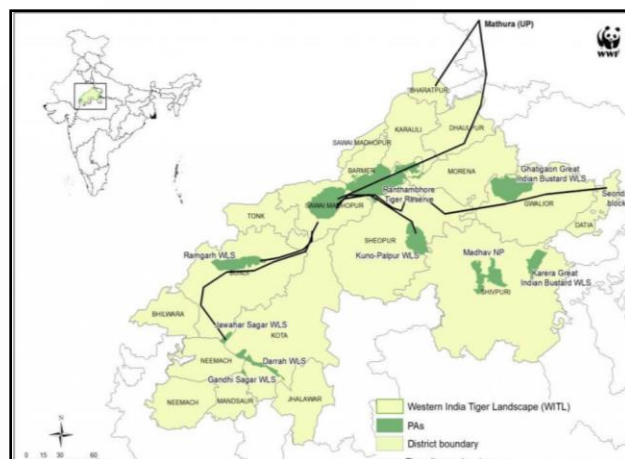


- Its main tributaries are **Suruliyaru, Mullaiyaru, Varaganadhi, Manjalaru, Kottagudi, Kridhumaal** and **Upparu**.
- The British had built a drinking water project named **Vaigai Dam in 1898** and linked it with **Mullaperiyar Dam** of present **Kerala** to meet the drinking water and irrigation needs.

RAMGARH VISHDHARI WILDLIFE SANCTUARY, RAJASTHAN

- Recently, the **National Tiger Conservation Authority (NTCA)** has given the green signal to **Ramgarh Vishdhari Wildlife Sanctuary** as **52nd Tiger Reserve of India**.
- It is the **fourth tiger reserve of Rajasthan** after Ranthambore, Sariska and Mukundra tiger reserves.
- It is like a buffer for the **Ranthambore National Park**.
- It is located almost 45 km on **Bundi-Nainwa Road** and covers an area of 252 square km.
- It is home to **wild predators** like hyena, tigers, panthers, antelopes and wild boars.
- It was **notified as a sanctuary** in 1982.
- It comprises of **hilly dry deciduous forests** on Vindhyan formations.



TILLARI CONSERVATION RESERVE

- The **Maharashtra state forest department** on declared **29.53 sq. km area** of **Dodamarg forest** range in **Sindhudurg** district.
- This area is known to **serve** as a **corridor** and even as a **habitat** for the **population** of **tigers** and elephants moving between the three states of **Goa, Karnataka** and **Maharashtra**.

